

BLOCK A

EXISTING TREES =	13
COMPROMISED HEALTH =	1
LIFTED ROOTS =	5
CONFLICT WITH INFRASTRUCTURE =	1
CONFLICT WITH AGENCY STANDARDS =	0
TREES INTENDED FOR PRESERVATION* =	6

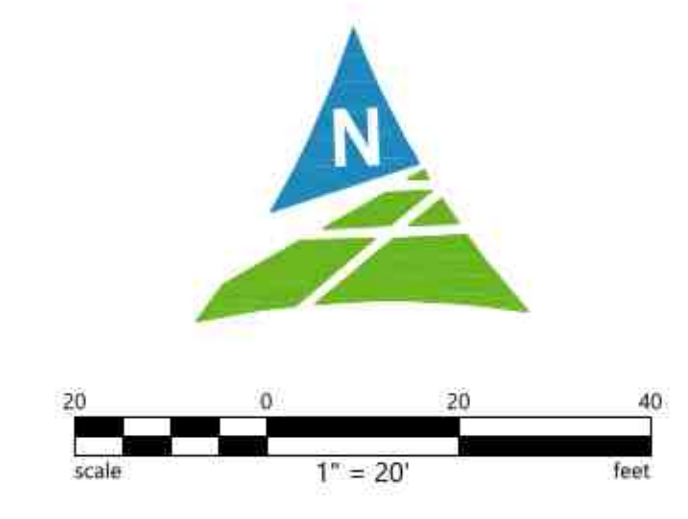
BLOCK B

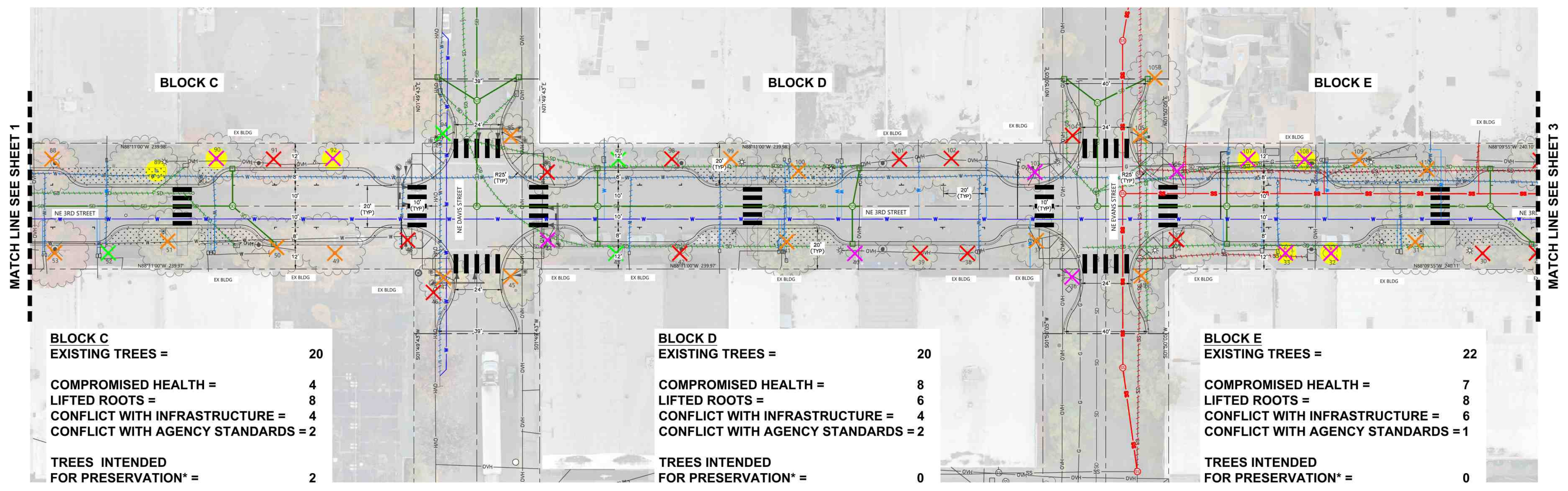
EXISTING TREES =	19
COMPROMISED HEALTH =	4
LIFTED ROOTS =	7
CONFLICT WITH INFRASTRUCTURE =	5
CONFLICT WITH AGENCY STANDARDS =	1
TREES INTENDED FOR PRESERVATION* =	2

TOTAL EXISTING TREES =	145	
TOTAL COMPROMISED HEALTH =	28	(19.3%)
TOTAL LIFTED ROOTS =	58	(40.0%)
TOTAL CONFLICT WITH INFRASTRUCTURE =	27	(18.6%)
TOTAL CONFLICT WITH AGENCY STANDARDS =	10	(6.9%)
TOTAL TREES INTENDED FOR PRESERVATION* =	22	(15.2%)

- LEGEND:**
- PROPERTY LINE
 - CENTER LINE
 - PROPOSED WATER MAIN
 - PROPOSED WATER LATERAL
 - PROPOSED FIRE SERVICE LATERAL
 - PROPOSED SANITARY SEWER LINE
 - PROPOSED STORM DRAIN LINE
 - REMOVE OR ABANDON EXISTING WATER LINE
 - REMOVE OR ABANDON EXISTING SANITARY SEWER LINE
 - REMOVE OR ABANDON EXISTING STORM DRAIN LINE
 - PROPOSED STORM DRAIN MANHOLE
 - PROPOSED STORM DRAIN INLET
 - PROPOSED STREET LIGHTS
 - HISTORICAL CISTERN
 - HISTORICAL WATER SUPPLY WELL
 - TREE REMOVED DUE TO COMPROMISED HEALTH (IDENTIFIED AS 'POOR', 'VERY POOR', OR 'DYING' IN 2024 TREE ASSESSMENT)
 - TREE REMOVED DUE TO LIFTED ROOTS (IDENTIFIED AS TRIP HAZARD WITH 'CRACKED & MAJOR UPLIFTING' BY PROJECT ARBORIST)
 - TREE REMOVED DUE TO CONFLICT WITH CRITICAL INFRASTRUCTURE
 - TREE REMOVED DUE TO CONFLICT WITH AGENCY STANDARDS (SEE NOTE 2)
 - TREE REMOVED DUE TO CONFLICT WITH MINIMUM SIDEWALK WIDTH (*DENOTES TREE PLANTED AFTER 2019 TREE SURVEY)
 - TREE INTENDED FOR PRESERVATION*

- NOTES:**
- REMOVE AND REPLACE ALL SANITARY SEWER LATERALS WHERE SANITARY SEWER MAINS ARE BEING REPLACED.
 - EXISTING TREES HAVE NOT BEEN MARKED "REMOVE DUE TO CONFLICT WITH AGENCY STANDARDS" WHERE SEPARATION REQUIREMENTS FROM EXISTING UTILITIES ARE NOT MET IF THOSE UTILITIES ARE TO REMAIN IN PLACE (APPLIED ONLY WHERE NEW UTILITIES ARE TO BE INSTALLED)
 - FINAL TREE LOCATION SHALL BE CONFIRMED IN THE FIELD WITH THE ENGINEER. STREET TREES SHALL NOT BE PLANTED WITHIN 10- FEET OF FIRE HYDRANTS, UTILITY POLES, STORM, SEWER, OR WATER LINES, WITHIN 20- FEET OF STREETLIGHTS OR STREET INTERSECTIONS, OR WITHIN 5- FEET OF PRIVATE DRIVEWAY OR ALLEYS PER CITY OF MC MINNVILLE MUNICIPAL CODE 17.58.090.E
- * TREES SHOWN INTENDED FOR PRESERVATION HAVE NOT BEEN FINALIZED. TREE DESIGNATIONS MAY VARY AS DESIGN IS FINALIZED.



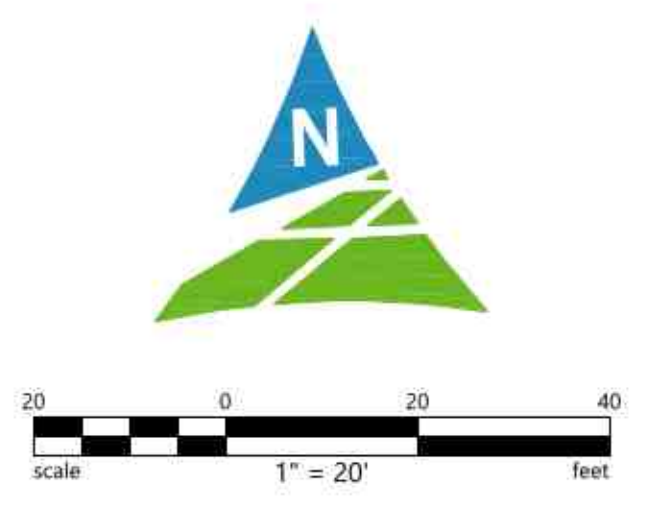


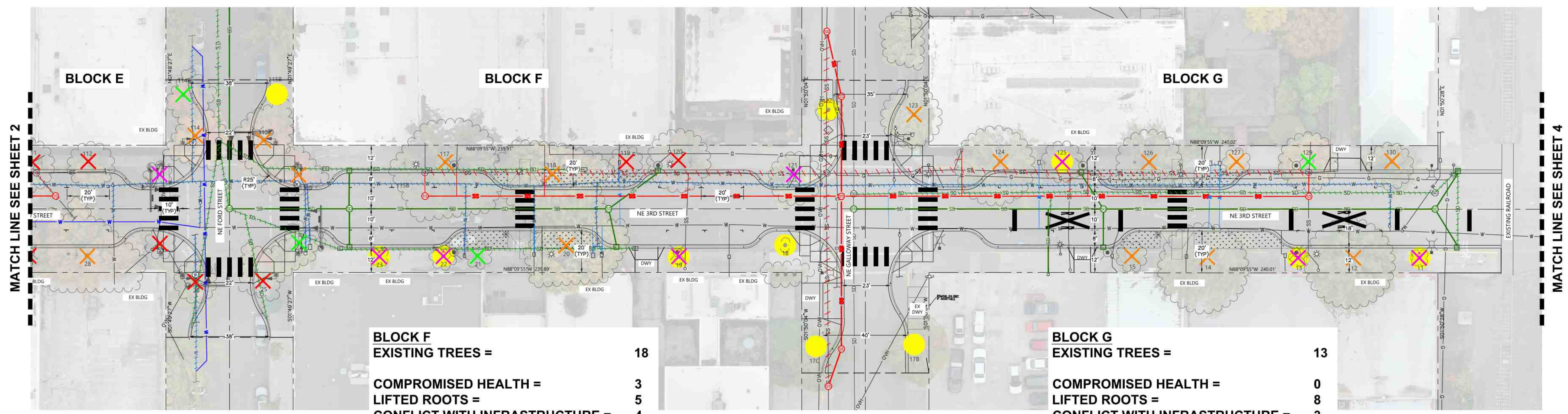
LEGEND:

- PROPERTY LINE
- CENTER LINE
- PROPOSED WATER MAIN
- PROPOSED WATER LATERAL
- PROPOSED FIRE SERVICE LATERAL
- PROPOSED SANITARY SEWER LINE
- PROPOSED STORM DRAIN LINE
- REMOVE OR ABANDON EXISTING WATER LINE
- REMOVE OR ABANDON EXISTING SANITARY SEWER LINE
- REMOVE OR ABANDON EXISTING STORM DRAIN LINE
- PROPOSED STORM DRAIN MANHOLE
- PROPOSED STORM DRAIN INLET
- PROPOSED STREET LIGHTS
- HISTORICAL CISTERN
- ⊙ HISTORICAL WATER SUPPLY WELL
- ✗ TREE REMOVED DUE TO COMPROMISED HEALTH (IDENTIFIED AS 'POOR', 'VERY POOR', OR 'DYING' IN 2024 TREE ASSESSMENT)
- ✗ TREE REMOVED DUE TO LIFTED ROOTS (IDENTIFIED AS TRIP HAZARD WITH 'CRACKED & MAJOR UPLIFTING' BY PROJECT ARBORIST)
- ✗ TREE REMOVED DUE TO CONFLICT WITH CRITICAL INFRASTRUCTURE
- ✗ TREE REMOVED DUE TO CONFLICT WITH AGENCY STANDARDS (SEE NOTE 2)
- ✗ TREE REMOVED DUE TO CONFLICT WITH MINIMUM SIDEWALK WIDTH (*DENOTES TREE PLANTED AFTER 2019 TREE SURVEY)
- TREE INTENDED FOR PRESERVATION*

NOTES:

1. REMOVE AND REPLACE ALL SANITARY SEWER LATERALS WHERE SANITARY SEWER MAINS ARE BEING REPLACED.
 2. EXISTING TREES HAVE NOT BEEN MARKED "REMOVE DUE TO CONFLICT WITH AGENCY STANDARDS" WHERE SEPARATION REQUIREMENTS FROM EXISTING UTILITIES ARE NOT MET IF THOSE UTILITIES ARE TO REMAIN IN PLACE (APPLIED ONLY WHERE NEW UTILITIES ARE TO BE INSTALLED)
 3. FINAL TREE LOCATION SHALL BE CONFIRMED IN THE FIELD WITH THE ENGINEER. STREET TREES SHALL NOT BE PLANTED WITHIN 10- FEET OF FIRE HYDRANTS, UTILITY POLES, STORM, SEWER, OR WATER LINES, WITHIN 20- FEET OF STREETLIGHTS OR STREET INTERSECTIONS, OR WITHIN 5- FEET OF PRIVATE DRIVEWAY OR ALLEYS PER CITY OF MCMINVILLE MUNICIPAL CODE 17.58.090.E
- * TREES SHOWN INTENDED FOR PRESERVATION HAVE NOT BEEN FINALIZED. TREE DESIGNATIONS MAY VARY AS DESIGN IS FINALIZED.





BLOCK F	
EXISTING TREES =	18
COMPROMISED HEALTH =	3
LIFTED ROOTS =	5
CONFLICT WITH INFRASTRUCTURE =	4
CONFLICT WITH AGENCY STANDARDS =	2

BLOCK G	
EXISTING TREES =	13
COMPROMISED HEALTH =	0
LIFTED ROOTS =	8
CONFLICT WITH INFRASTRUCTURE =	3
CONFLICT WITH AGENCY STANDARDS =	1

TREES INTENDED FOR PRESERVATION* =	4
---	----------

TREES INTENDED FOR PRESERVATION* =	1
---	----------

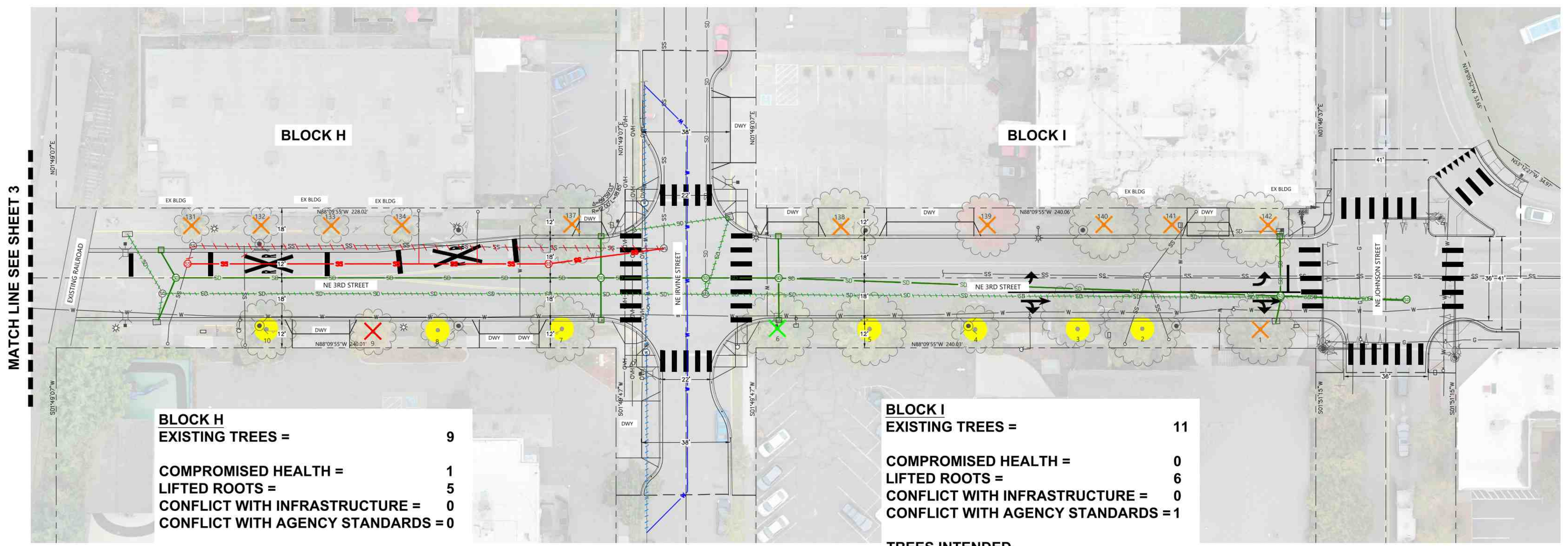
LEGEND:

- PROPERTY LINE
- CENTER LINE
- PROPOSED WATER MAIN
- PROPOSED WATER LATERAL
- PROPOSED FIRE SERVICE LATERAL
- PROPOSED SANITARY SEWER LINE
- PROPOSED STORM DRAIN LINE
- REMOVE OR ABANDON EXISTING WATER LINE
- REMOVE OR ABANDON EXISTING SANITARY SEWER LINE
- REMOVE OR ABANDON EXISTING STORM DRAIN LINE
- PROPOSED STORM DRAIN MANHOLE
- PROPOSED STORM DRAIN INLET
- PROPOSED STREET LIGHTS
- HISTORICAL CISTERN
- HISTORICAL WATER SUPPLY WELL
- ✗ TREE REMOVED DUE TO COMPROMISED HEALTH (IDENTIFIED AS 'POOR', 'VERY POOR', OR 'DYING' IN 2024 TREE ASSESSMENT)
- ✗ TREE REMOVED DUE TO LIFTED ROOTS (IDENTIFIED AS TRIP HAZARD WITH 'CRACKED & MAJOR UPLIFTING' BY PROJECT ARBORIST)
- ✗ TREE REMOVED DUE TO CONFLICT WITH CRITICAL INFRASTRUCTURE
- ✗ TREE REMOVED DUE TO CONFLICT WITH AGENCY STANDARDS (SEE NOTE 2)
- ✗ TREE REMOVED DUE TO CONFLICT WITH MINIMUM SIDEWALK WIDTH (*DENOTES TREE PLANTED AFTER 2019 TREE SURVEY)
- TREE INTENDED FOR PRESERVATION*

NOTES:

1. REMOVE AND REPLACE ALL SANITARY SEWER LATERALS WHERE SANITARY SEWER MAINS ARE BEING REPLACED.
 2. EXISTING TREES HAVE NOT BEEN MARKED "REMOVE DUE TO CONFLICT WITH AGENCY STANDARDS" WHERE SEPARATION REQUIREMENTS FROM EXISTING UTILITIES ARE NOT MET IF THOSE UTILITIES ARE TO REMAIN IN PLACE (APPLIED ONLY WHERE NEW UTILITIES ARE TO BE INSTALLED)
 3. FINAL TREE LOCATION SHALL BE CONFIRMED IN THE FIELD WITH THE ENGINEER. STREET TREES SHALL NOT BE PLANTED WITHIN 10- FEET OF FIRE HYDRANTS, UTILITY POLES, STORM, SEWER, OR WATER LINES, WITHIN 20- FEET OF STREETLIGHTS OR STREET INTERSECTIONS, OR WITHIN 5- FEET OF PRIVATE DRIVEWAY OR ALLEYS PER CITY OF MCMINNVILLE MUNICIPAL CODE 17.58.090.E
- * TREES SHOWN INTENDED FOR PRESERVATION HAVE NOT BEEN FINALIZED. TREE DESIGNATIONS MAY VARY AS DESIGN IS FINALIZED.





BLOCK H	
EXISTING TREES =	9
COMPROMISED HEALTH =	1
LIFTED ROOTS =	5
CONFLICT WITH INFRASTRUCTURE =	0
CONFLICT WITH AGENCY STANDARDS =	0
TREES INTENDED FOR PRESERVATION* =	3

BLOCK I	
EXISTING TREES =	11
COMPROMISED HEALTH =	0
LIFTED ROOTS =	6
CONFLICT WITH INFRASTRUCTURE =	0
CONFLICT WITH AGENCY STANDARDS =	1
TREES INTENDED FOR PRESERVATION* =	4

- LEGEND:**
- PROPERTY LINE
 - CENTER LINE
 - PROPOSED WATER MAIN
 - PROPOSED WATER LATERAL
 - PROPOSED FIRE SERVICE LATERAL
 - PROPOSED SANITARY SEWER LINE
 - PROPOSED STORM DRAIN LINE
 - REMOVE OR ABANDON EXISTING WATER LINE
 - REMOVE OR ABANDON EXISTING SANITARY SEWER LINE
 - REMOVE OR ABANDON EXISTING STORM DRAIN LINE
 - PROPOSED STORM DRAIN MANHOLE
 - PROPOSED STORM DRAIN INLET
 - PROPOSED STREET LIGHTS
 - HISTORICAL CISTERN
 - HISTORICAL WATER SUPPLY WELL
 - ✗ TREE REMOVED DUE TO COMPROMISED HEALTH (IDENTIFIED AS 'POOR', 'VERY POOR', OR 'DYING' IN 2024 TREE ASSESSMENT)
 - ✗ TREE REMOVED DUE TO LIFTED ROOTS (IDENTIFIED AS TRIP HAZARD WITH 'CRACKED & MAJOR UPLIFTING' BY PROJECT ARBORIST)
 - ✗ TREE REMOVED DUE TO CONFLICT WITH CRITICAL INFRASTRUCTURE
 - ✗ TREE REMOVED DUE TO CONFLICT WITH AGENCY STANDARDS (SEE NOTE 2)
 - ✗ TREE REMOVED DUE TO CONFLICT WITH MINIMUM SIDEWALK WIDTH (*DENOTES TREE PLANTED AFTER 2019 TREE SURVEY)
 - TREE INTENDED FOR PRESERVATION*

- NOTES:**
- REMOVE AND REPLACE ALL SANITARY SEWER LATERALS WHERE SANITARY SEWER MAINS ARE BEING REPLACED.
 - EXISTING TREES HAVE NOT BEEN MARKED "REMOVE DUE TO CONFLICT WITH AGENCY STANDARDS" WHERE SEPARATION REQUIREMENTS FROM EXISTING UTILITIES ARE NOT MET IF THOSE UTILITIES ARE TO REMAIN IN PLACE (APPLIED ONLY WHERE NEW UTILITIES ARE TO BE INSTALLED)
 - FINAL TREE LOCATION SHALL BE CONFIRMED IN THE FIELD WITH THE ENGINEER. STREET TREES SHALL NOT BE PLANTED WITHIN 10- FEET OF FIRE HYDRANTS, UTILITY POLES, STORM, SEWER, OR WATER LINES, WITHIN 20- FEET OF STREETLIGHTS OR STREET INTERSECTIONS, OR WITHIN 5- FEET OF PRIVATE DRIVEWAY OR ALLEYS PER CITY OF MCMINNVILLE MUNICIPAL CODE 17.58.090.E
- * TREES SHOWN INTENDED FOR PRESERVATION HAVE NOT BEEN FINALIZED. TREE DESIGNATIONS MAY VARY AS DESIGN IS FINALIZED.

