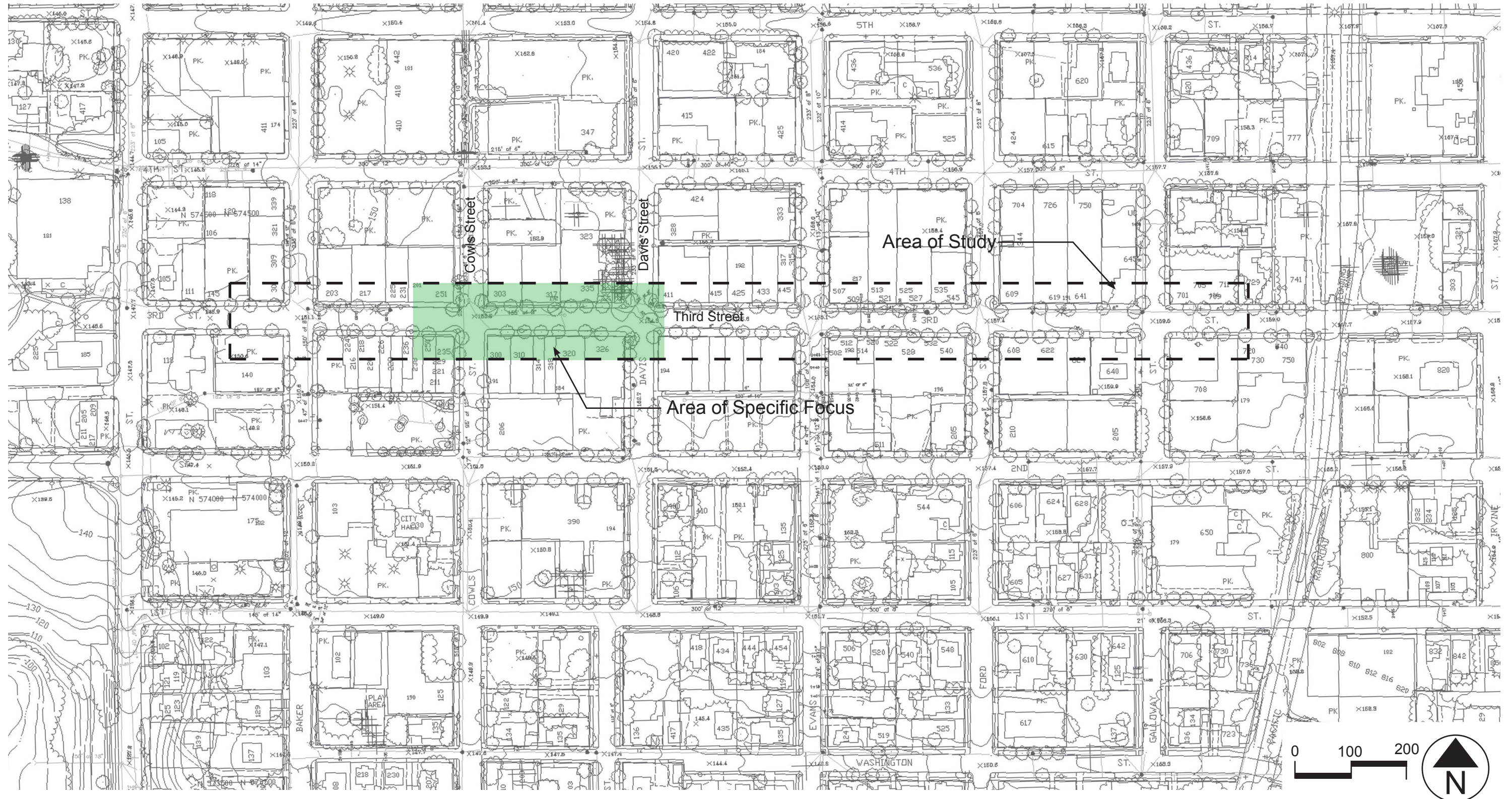
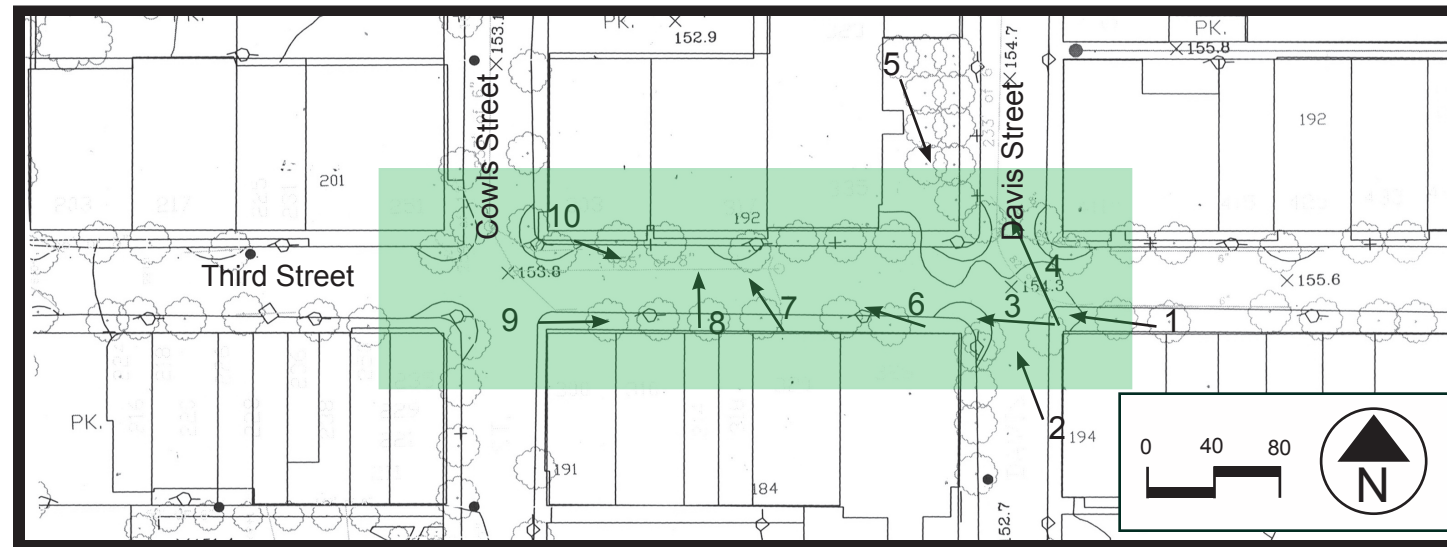


Third Street Study Area



Existing Photos



Streetscape Furnishings

Small Projects Description

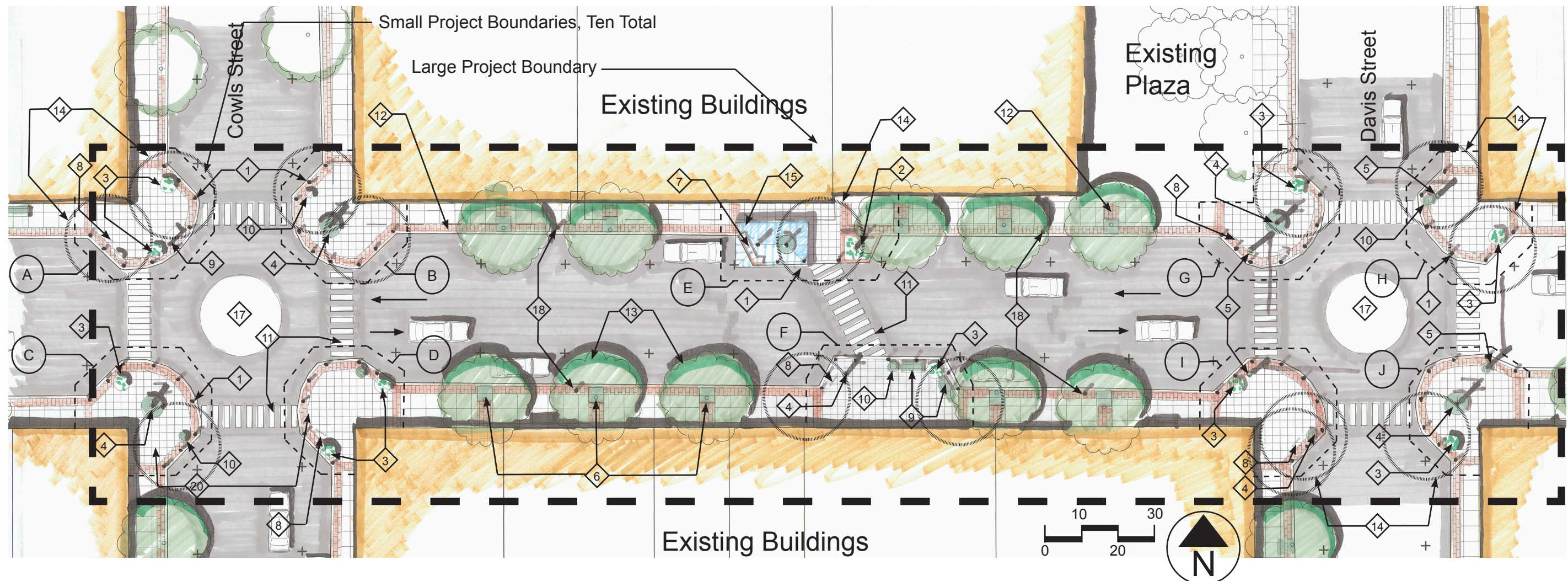
Small localized projects denoted by letters A-J are improvements that can be completed on a phased schedule. Projects require only asphalt patching at adjacent street, without street demolition and with only localized utility work.

Large Project Description

The large project encompasses all street improvements for one block including two intersections along Third Street. This includes street and sidewalk repaving as well as the implementation of new crosswalks.

Keynotes

- | | | |
|---|--|--|
| <ul style="list-style-type: none"> 1 Bollards at Street corners and mid-block 2 Raised Planter Bed 3 Concrete Planter Tub 4 Street Lights with custom bench surrounding and street signage to match existing downtown Historic District signage. 5 Light Signal - remove Cobra Lights above traffic signal level - repaint traffic signal exposed steel uprights and arms to match finish of other streetscape elements 6 Open tree wells at all existing trees. Replace with 48" square tree grates when trees are replanted/ rotated. | <ul style="list-style-type: none"> 7 Newspaper and trash receptacle surround 8 Bike Parking Rack 9 Bench 10 Trash Receptacle 11 Painted Zebra Stripe Crosswalk/ alternate of brick paving with same width 12 Brick sidewalk strips, 2' wide 13 Existing Trees to remain until rotated out for new trees, typical. | <ul style="list-style-type: none"> 14 Existing Trees removed for project 15 Mid-block Shelter 16 Custom Bench surrounding street-light, typical. 17 Drivable Street Intersection Inlaid with Decorative or Historic Theme 18 Light Bollards between corner and mid-block for fill light 19 Concrete - 4' x 4' pattern 20 Concrete - 2' x 2' pattern, typical at street corner and mid-block |
|---|--|--|



Streetscape Furnishings



Street Light

Manufacturer: Sternberg
 Style: similar to installed at McMinnville News Register
 Color: Park Green



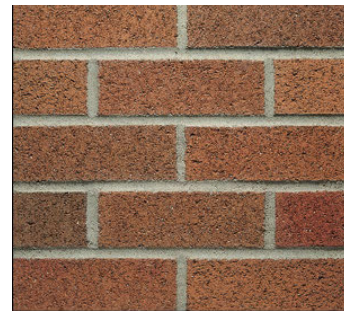
Bollards and Lit Bollards

Manufacturer: Sternberg
 Style: Norwood
 Color: Park Green



Concrete Pattern

2' x 2' and 4' x 4' grid pattern



Brick Accent

Color: Red Varitone
 Manufacturer: Mutual Materials or approved



Concrete Planters

Manufacturer: Nitterhouse, Wausau, Tile, or approved
 Style: 3', 4', or 5' Round Planter



Bike Racks

Manufacturer: Kay Park Recreation Group, Madrax or approved
 Style: Loop Style Bike Rack
 Color: Black or approved



Benches

Custom bench to match construction type of above only round.



Street Signage

Historical, similar to current signage



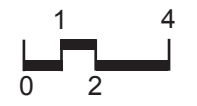
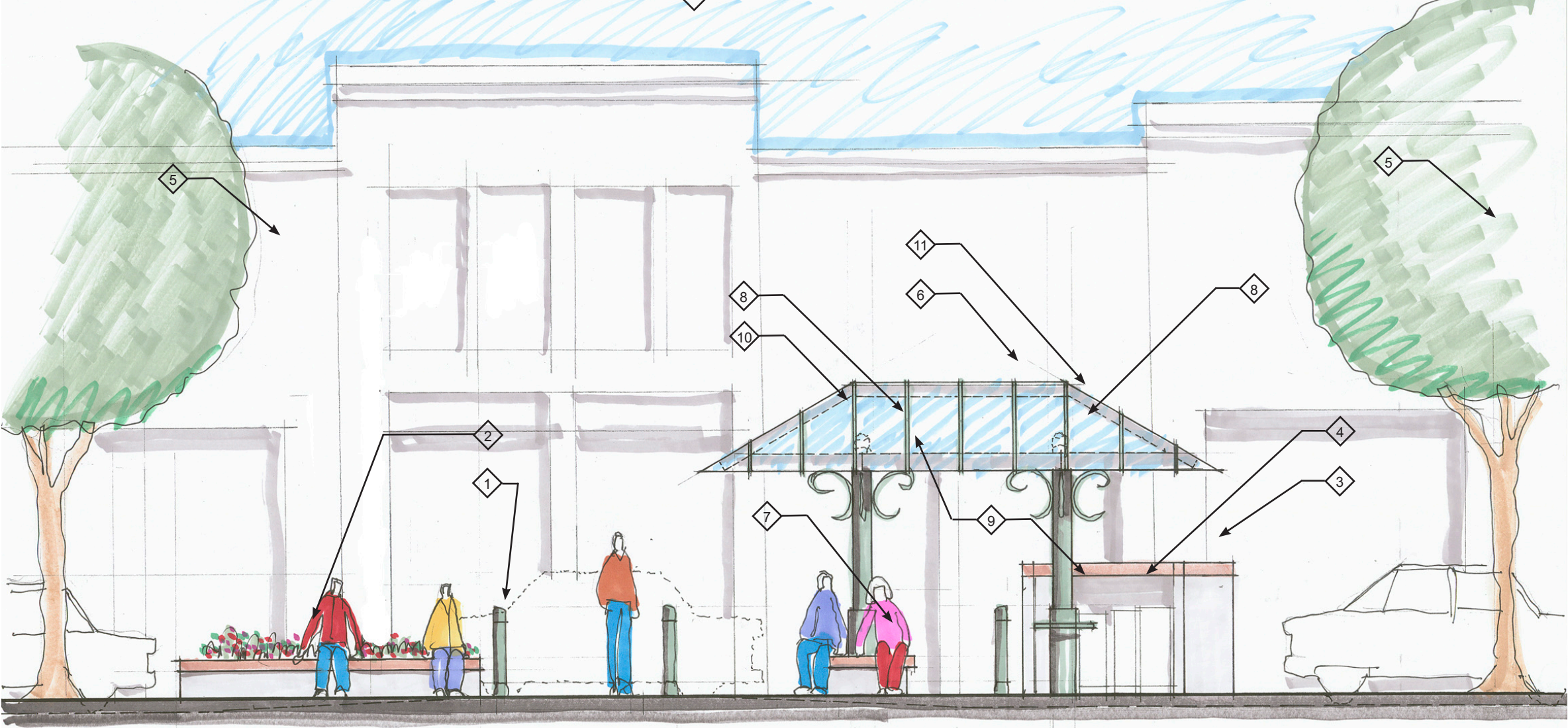
Trash Receptacles, including recycling

Trash Receptacle similar to picture above
 Recycling Receptacle Manufacturer: Windsor Barrel Works or approved

Mid-Block Elevations

Keynotes

- 1 Bollards at Street corners and mid-block
- 2 Raised Planter Bed, irrigated, concrete or block with brick cap, typ.
- 3 Newspaper and trash receptacle surround, concrete or block with brick cap
- 4 Trash Receptacles, newspaper and magazine racks, power and water controls, etc.
- 5 Existing Trees to remain until rotated out for new trees
- 6 Mid-block Shelter
- 7 Custom Bench around support to match streetlight custom bench
- 8 Luminaire
- 9 Painted Metal support, beams and decorative features
- 10 Wood Joists
- 11 Translucent Glass or Acrylic



Perspective Rendering

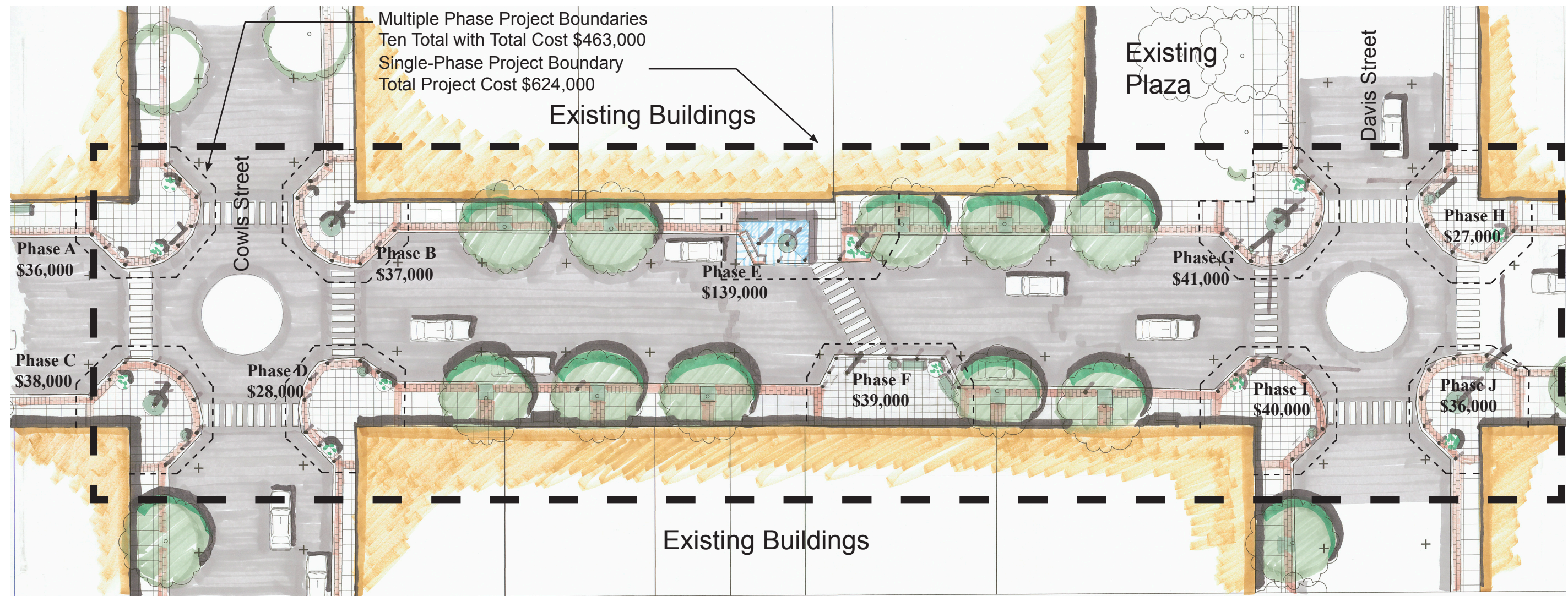


Proposed



Existing

Cost Estimate



Total Cost for Single-Phase Project: \$624,000
 Total Cost of Multiple-Phase Project for Total of Ten Phases: \$463,000

