





609 NE 3rd St: O'Dell Building



611 NE 3rd St: News-Register Building



619 NE 3rd St: Bennette Building

Building(s)	Address	Price	S.F.	Price/Gross S.F.
Historic Elks Lodge	520-532 NE 3 rd St.	\$1,513,400	19,400	\$78



Historic Elks Lodge Listing Photos

Building(s)	Address	Price	S.F.	Price/Gross S.F.
Historic Elks Lodge	520-532 NE 3 rd St.	\$1,513,400	19,400	\$78
Mack Theater/Hotel Yamhill	502 & 510 NE 3 rd St.	\$2,300,000	23,234	\$99



Historic Elks Lodge Listing Photos

Building(s)	Address	Price	S.F.	Price/Gross S.F.
Historic Elks Lodge	520-532 NE 3 rd St.	\$1,513,400	19,400	\$78
Mack Theater/Hotel Yamhill	502 & 510 NE 3 rd St.	\$2,300,000	23,234	\$99
News-Register/Wild Haven	609, 611 & 619 NE 3 rd St.	\$3,475,000	18,188	\$191



Historic Elks Lodge Listing Photos



Front Half of the Bennette Building - 619 NE 3rd St.

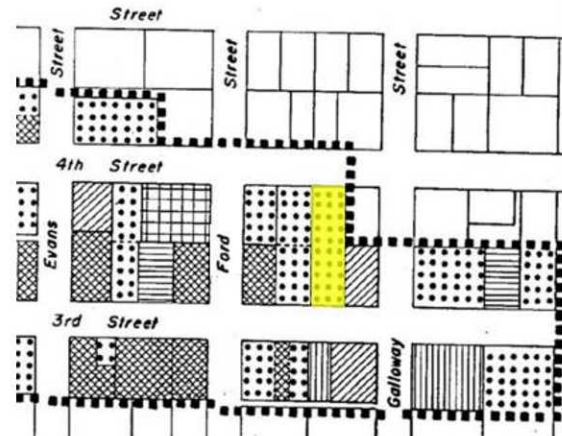
This building is a one story brick structure facing south on Third Street and extending north the entire depth of the block with a similar elevation on Fourth. A flat roof is concealed by parapet walls on either end and the facades each have seven stepped forward piers and corbelled cornice lines. The south facade has a large window and three doors. Two of them are large enough to accommodate automobiles. Three low gabled projection creating a partial second story, protrude from the roof toward the rear. The building has always accommodated garages.

Bennette family (John, then Richard) operated auto agency from 1936-1977

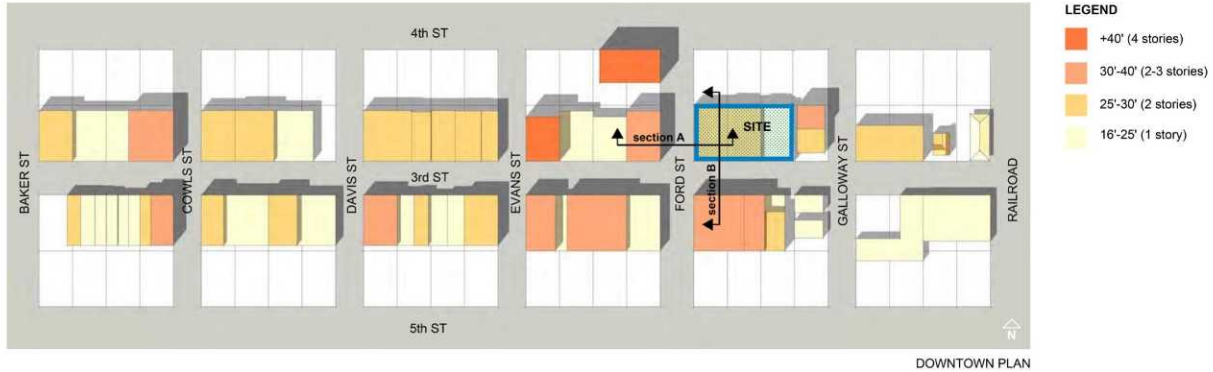
1983 Historic Resources Survey



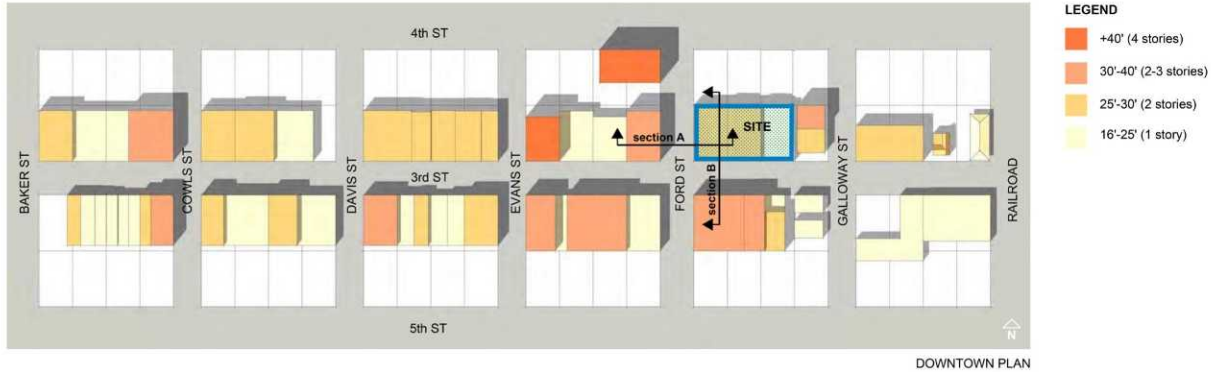
Back Half of the Bennette Building - 628/634 4th St.



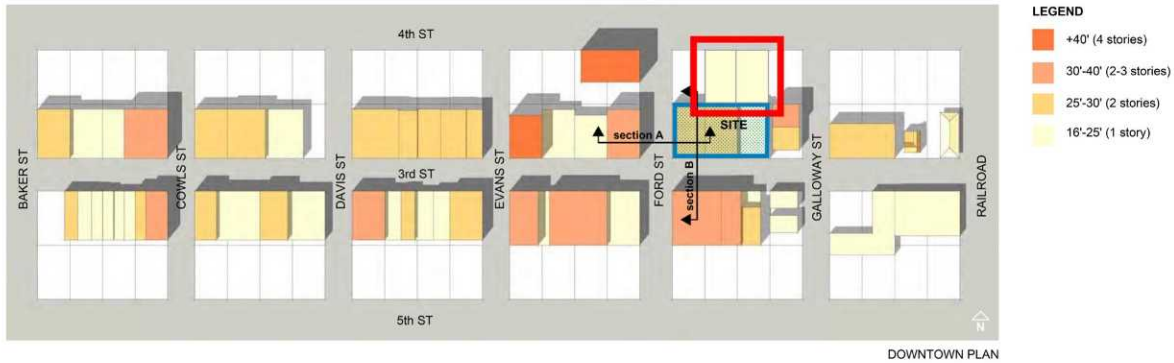
Historic District Map



Inaccurate height study by applicant

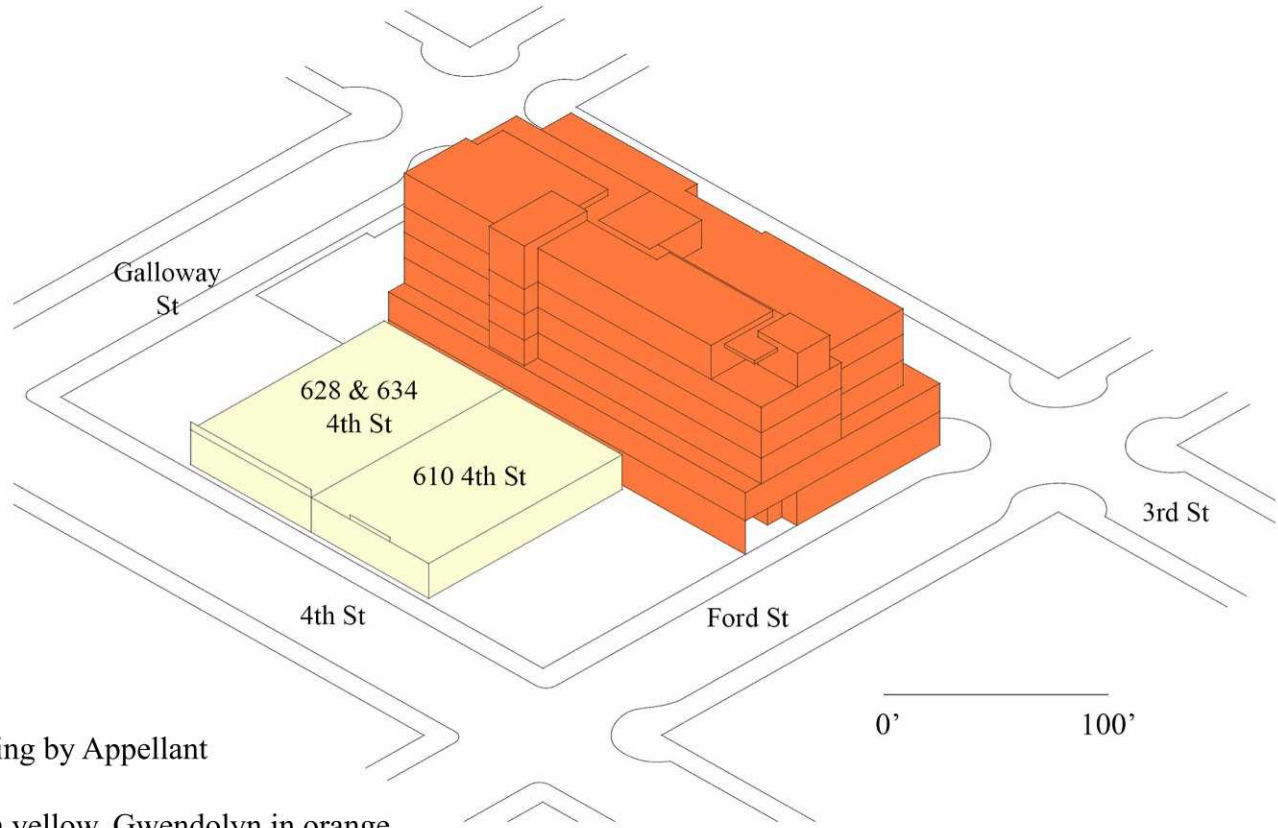


Inaccurate height study by applicant



Height study corrected by appellant

MZO 17.59.050(b)(1): *Buildings should have massing and configuration similar to adjacent or nearby historic buildings on the same block.*

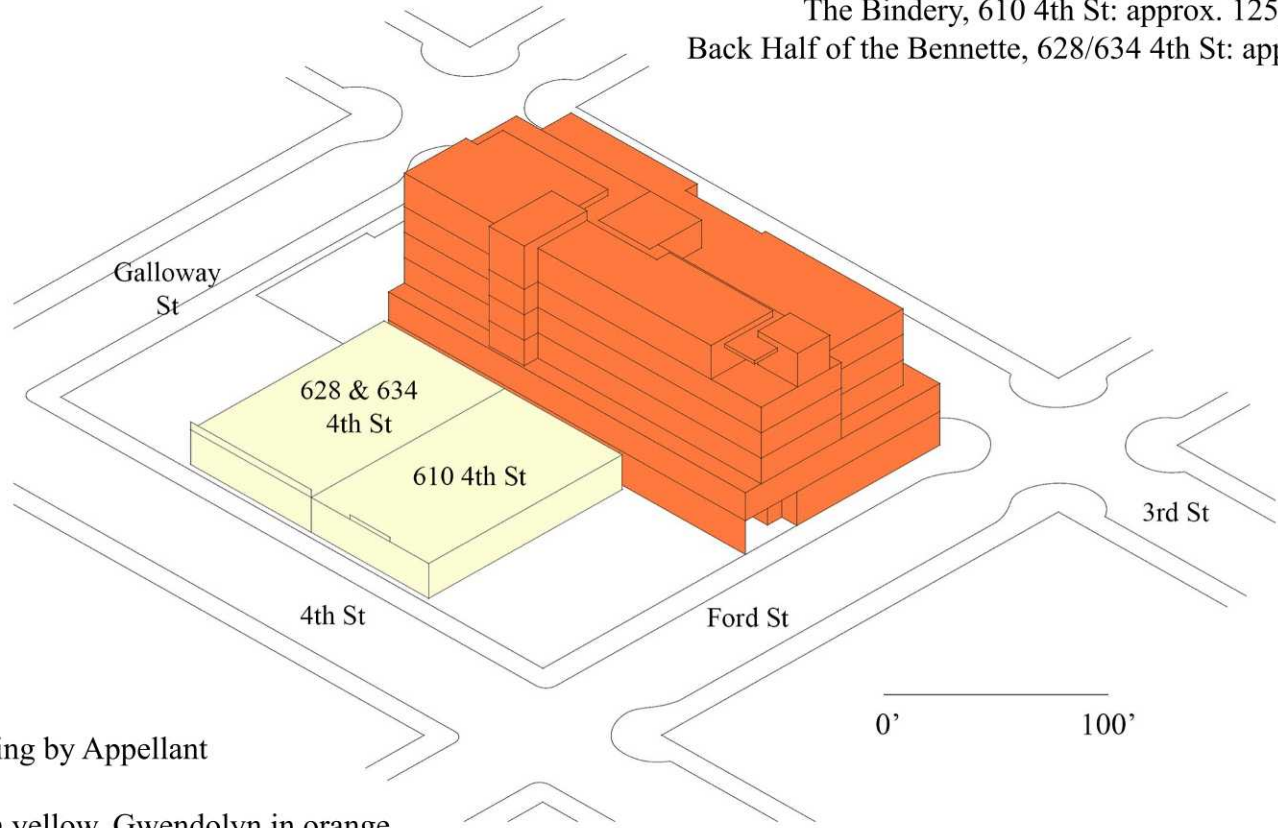


Drawing by Appellant

Historic buildings in yellow, Gwendolyn in orange

MZO 17.59.050(b)(1): *Buildings should have massing and configuration similar to adjacent or nearby historic buildings on the same block.*

The Bindery, 610 4th St: approx. 125,000 cubic ft.
Back Half of the Bennette, 628/634 4th St: approx. 125,000 cubic ft.

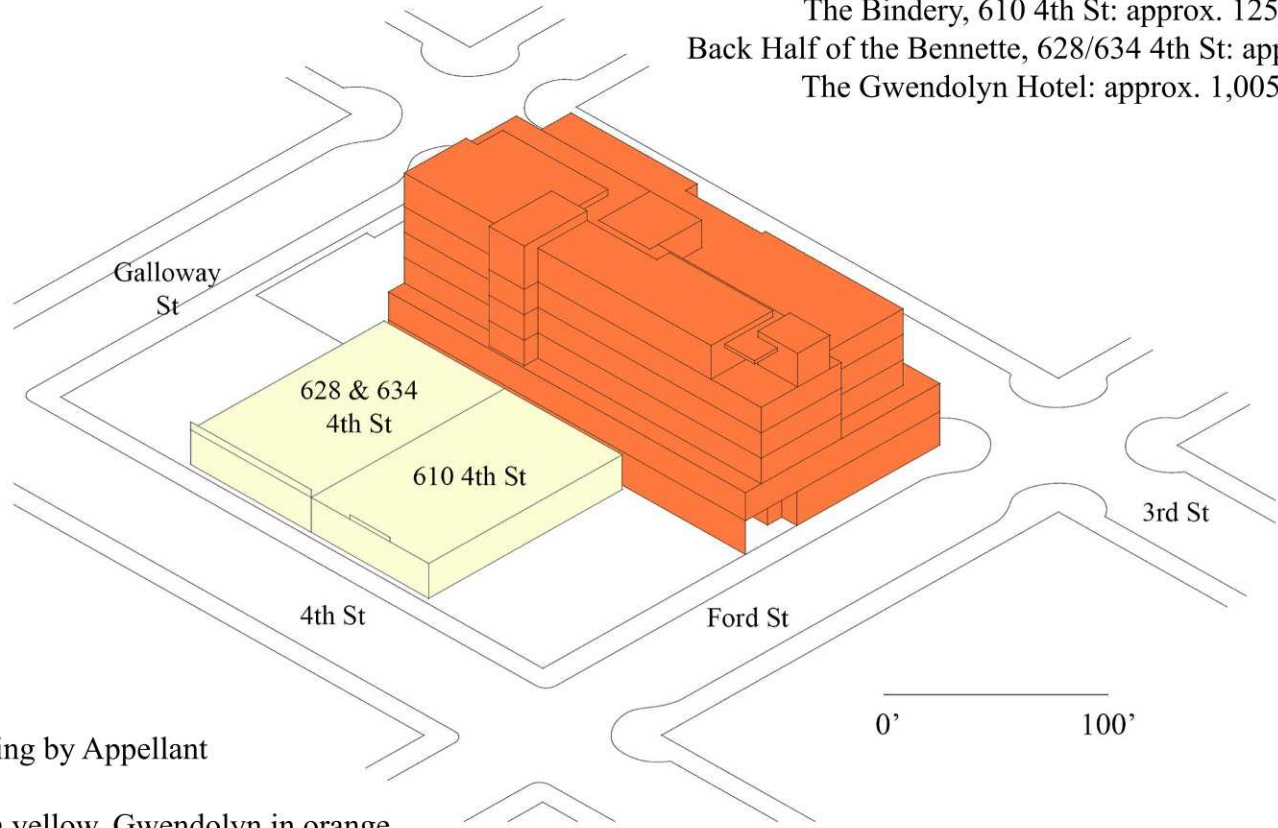


Drawing by Appellant

Historic buildings in yellow, Gwendolyn in orange

MZO 17.59.050(b)(1): *Buildings should have massing and configuration similar to adjacent or nearby historic buildings on the same block.*

The Bindery, 610 4th St: approx. 125,000 cubic ft.
Back Half of the Bennette, 628/634 4th St: approx. 125,000 cubic ft.
The Gwendolyn Hotel: approx. 1,005,000 cubic ft.



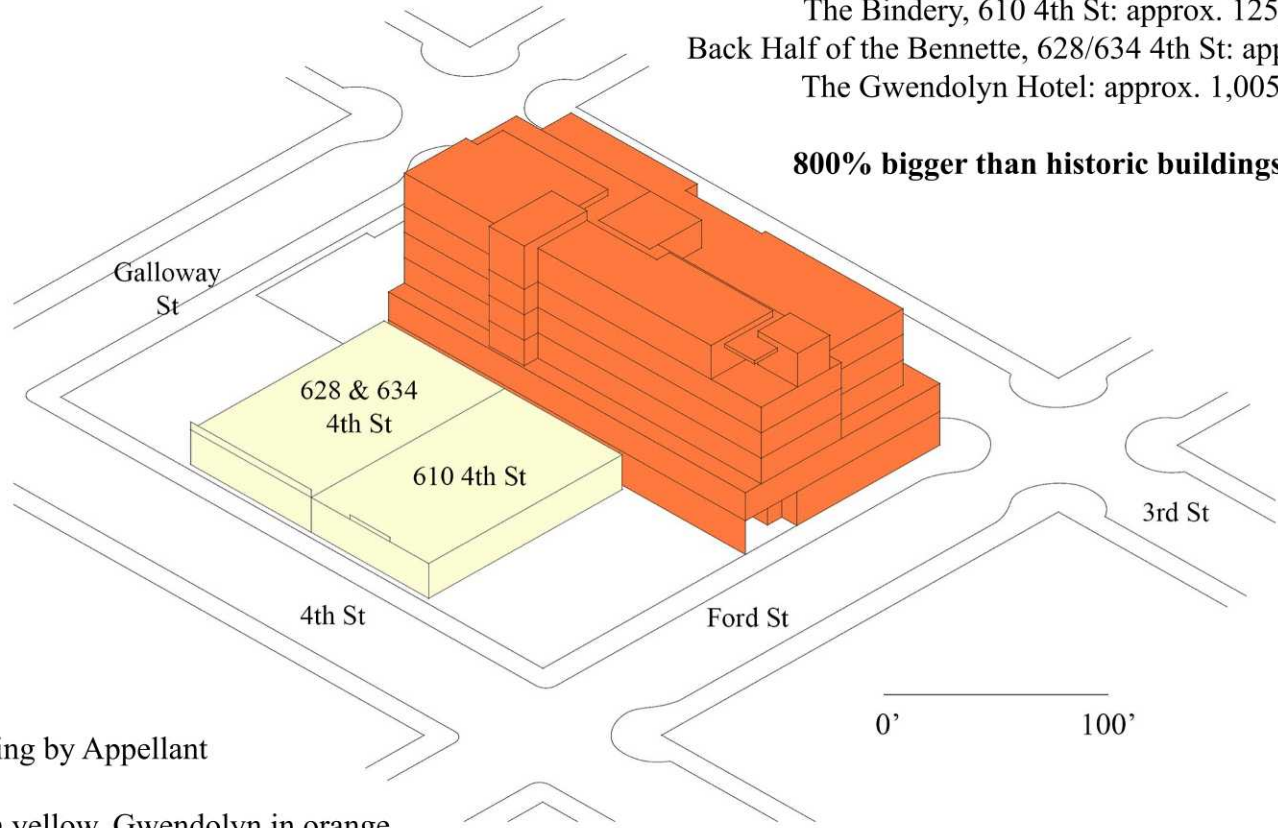
Drawing by Appellant

Historic buildings in yellow, Gwendolyn in orange

MZO 17.59.050(b)(1): *Buildings should have massing and configuration similar to adjacent or nearby historic buildings on the same block.*

The Bindery, 610 4th St: approx. 125,000 cubic ft.
Back Half of the Bennette, 628/634 4th St: approx. 125,000 cubic ft.
The Gwendolyn Hotel: approx. 1,005,000 cubic ft.

800% bigger than historic buildings on the block



Drawing by Appellant

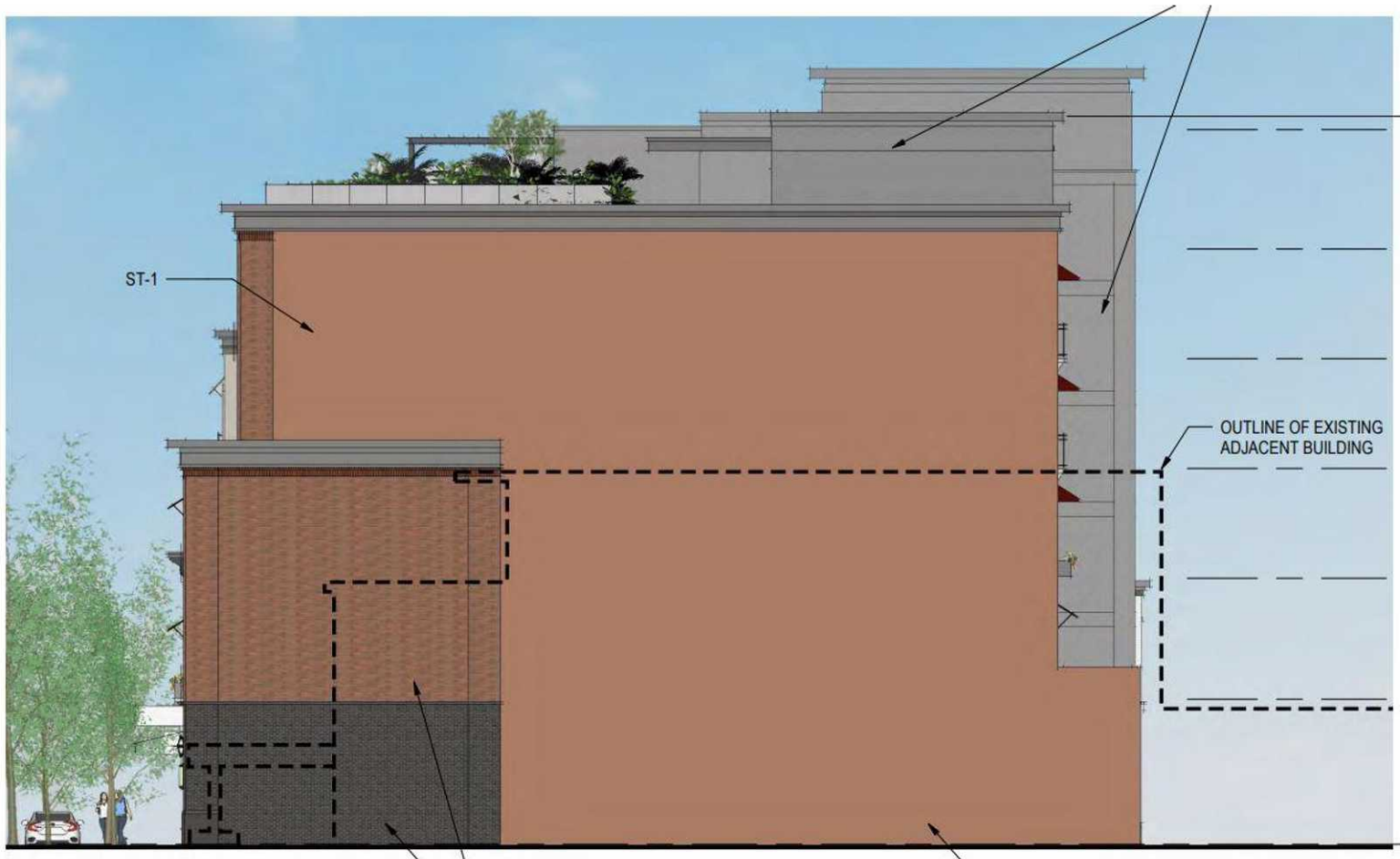
Historic buildings in yellow, Gwendolyn in orange



Third St. from the East - Before



Third St. from the East - After



Gwendolyn Hotel East Elevation



Historic 3rd Street, north blocks at top, south blocks at bottom